

EVIDENCE-BASED EDUCATION

# Resource Library



# When we say we're here to help, we mean it.

INTRODUCTION

In the face of overwhelming demands, these resources should lighten your load when it comes to **justifying your spend, implementing solutions, and documenting achievement.**

# Contents

<a href="#">Federal Guidance and Requirements</a>	<a href="#">Maximizing ARPA Webinar</a>	<a href="#">Research Resources</a>	<a href="#">Evidence-Based Education Repositories</a>	<a href="#">Assessment Solutions</a>
01.	02.	03.	04.	05.



## Critical Information for Implementing Evidence-Based Education

Evidence-based instructional practices (EBIPs) are practices that, as demonstrated in a preponderance of research findings, support students' development of long-term conceptual understanding and problem-solving skills.



# Federal Guidance and Requirements

## FEDERAL REGISTER

### [Guidance for Grants and Agreements](#)

Review final guidance from the Office of Management and Budget.

## U.S. DEPARTMENT OF EDUCATION

### [Grants](#)

Access eligibility, deadlines, applications, and other grant information.

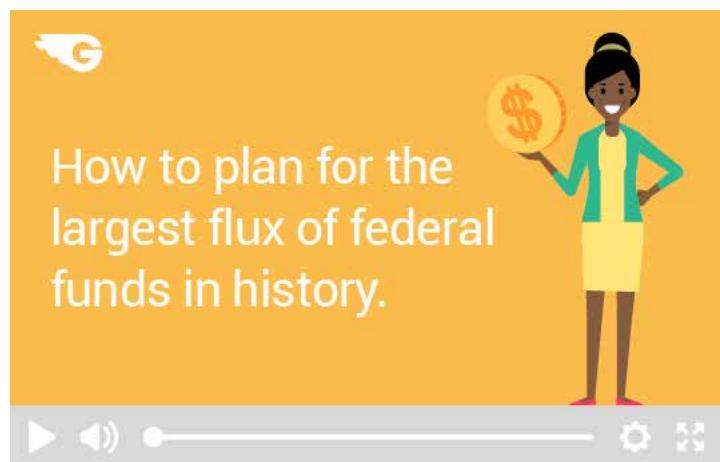
### [Education Stabilization Fund](#)

Use this interactive resource for current ESF data.

### [Formula Grants](#)

Explore formula grant programs and support services.

## WEBINARS ON DEMAND



PLAY VIDEO

02.



## Susan Gentz

Susan comes from a strong policy background as a former staffer in the United States Senate and Legislative Aide in the Iowa House of Representatives.

Along with experience at both federal and state levels, she served as the Deputy Executive Director for the Center for Digital Education, worked for a government relations firm in Arlington, VA and focused on federal and state education policy at INACOL, where she wrote published reports to move the field forward with innovative learning models, best practices, and policy recommendations.

# Maximizing ARPA Webinar

The American Rescue Plan Act is officially law and \$122 billion dollars are headed to districts to prepare for in-person learning. Susan Gentz offers insights on allowable uses, congressional requirements, and creative ways to bundle and stretch your ARPA funds. Learn how to maximize the impact of this once-in-a-lifetime influx of federal funds.



# Research Resources

▶ [Evidence-Based Education](#)

The Wing Institute

▶ [Evidence-Based Education](#)

EvidenceBased.Education

▶ [What Are Evidence-Based Practices?](#)

Vanderbilt University

▶ [Evidence-Based Practices In Instruction](#)

IDEAs That Work

▶ [Evidence-Based Practices in School Improvement](#)

U.S. Department of Education

▶ [What Works Clearinghouse - Standards Handbook](#)

Institute of Education Sciences

▶ [Evidence-Based Teaching Strategies - Top 10](#)

Clemson University

▶ [Top 10 Evidence-Based Teaching Strategies](#)

University of Nebraska-Lincoln



# Evidence-Based Education Repositories

These exceptional online resources offer easy access to additional information, evidence, and strategies for evidence-based instruction and intervention.

- ▶ [American Institutes for Research](#)
- ▶ [Institute of Education Sciences](#)
- ▶ [IRIS Center](#)
- ▶ [Mathematica](#)
- ▶ [McREL International](#)
- ▶ [Regional Educational Laboratories](#)
- ▶ [What Works Clearinghouse](#)

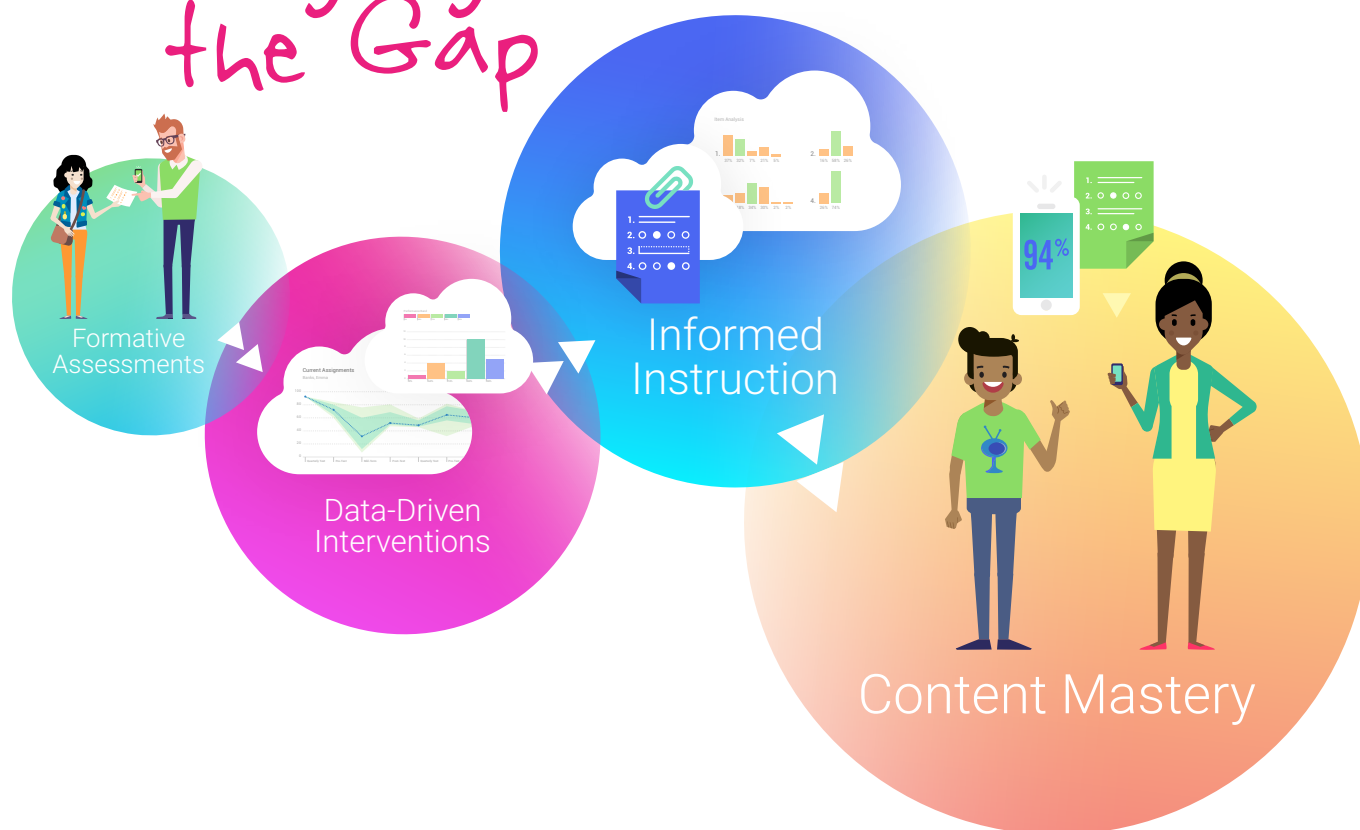
05.

## Assessment Solutions

# Intervention begins with assessment.

Educators need to know where students are and how they're progressing to get them where they need to be.

## Bridging the Gap



# Assessment solutions with real value.

GradeCam is a valuable, flexible, and sustainable resource for implementing and complementing your post-COVID strategies and systems.

[VIEW ALL PLANS](#)[REQUEST A DEMO](#)

## GRADECAM GRADIENT

### Discover what Gradient makes possible.

Customize and print forms, track existing and custom standards, scan and score assessments, aggregate and share data, instantly transfer grades, and inform instruction and decision-making.

[LEARN MORE](#)

## SCHOOL/DISTRICT EDITION

### Leverage actionable data for schools/districts.

Establish a collaborative system that supports a continuous improvement cycle.

[LEARN MORE](#)

## STUDENT PORTAL

### Bridge the distance with hybrid learning.

Use GradeCam online, on paper, or both and keep all the data together.

[LEARN MORE](#)